

Digitizer KK-WI-300-Dyl

Digitize "KK-WI-300" a microprocessor based state-of-art indicator with sigma delta type 24 bit analog to digital conversion. Standard RS232 communication for continuous weight transmission make it suitable for interfacing with PC software. KK-WI-300 robust in nature to withstand harsh environmental condition. It can operate reliably over a wide temperature range and also in humid weather.



Scope of Supply

- Digitizer KK-WI-300-Dyl
- Power cable
- Loadcell connector
- Serial communication cable

Features

- Front mount 1" (25mm) LED display to show weight
- Attractive looks
- Rigid performance
- Standard 9pin D type RS232 (Com) port, for continuous transmission of weight at 2400 baud rate
- Easy & secured installation with front four keys
- Improved SMPS power supply
- EMI-RFI filter & spike suppressor for input power
- Table top port for connecting external wired display
- Multi step calibration procedure to achieve perfect and error free calibration, to get accurate weight powered by Sigma Delta type 24 bit ADC
- Dual range system for achieving better accuracy at lower weight range
- Facility to change calibration password in field
- Smart calibration to correct minor weight deviation without using actual test weights
- Auto zero tracking to track zero position
- Selectable display of zero/actual weight on power 'ON'
- Customization for RS232 communication string baud rate, parity & format to match with pre installed indicators (optional)

Marketed by :

Kanta King

C-25, 2nd Floor, DSIDC Complex, Kirti Nagar,
New Delhi - 110015, INDIA



+91.9560915555



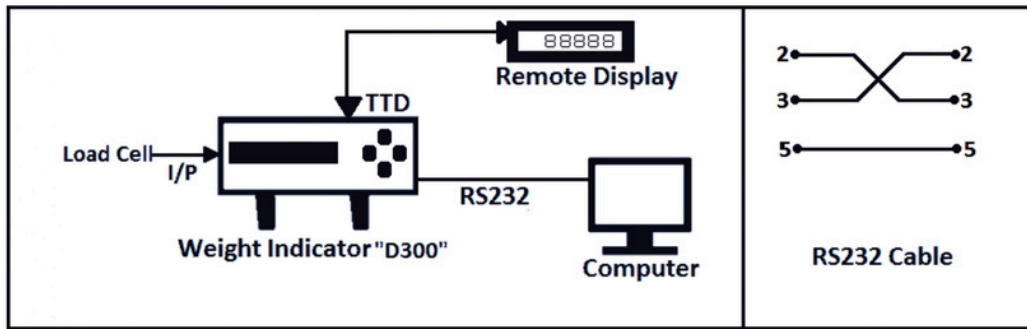
info@kantaking.com



www.kantaking.com

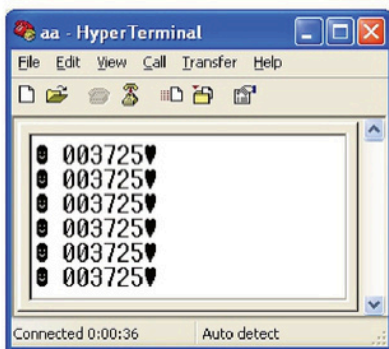


Peripherals



Technical Specifications

Weight on Test Program



Front Panel



Rear Panel



Applications

- ① Public Weighbridges
- ② Industrial Weighbridges
- ③ Toll Ways

Processor	8051 derivative
Processor clock frequency	18 MHz
Power supply	SMPS power supply
Input voltage	90V to 270V AC @ 50Hz
Protection	<ul style="list-style-type: none"> * 750mA fuse for input AC mains * Input line filter for EMI and RFI suppression * Spike suppressor for input transients * Opto isolation of signals and I/Os for high immunity from electrical noise
Power consumption	10 VA (approx.)
A/D converter	Sigma Delta type with 24 Bit resolution
A/D clock	5 MHz
Conversion speed	Internal 20 samples per second
Load cell excitation	8V DC with current capability to drive up to 8 load cells of 350 ohms input resistance.
Signal sensitivity	0.3 micro volt per division of weight
Display	1" Red LED display
Keyboard	Front four keys
Serial port	Isolated RS232 serial port (9pin D type) for continuous weight transfer
Remote display port	Remote display port is provided to show weight by connecting external seven segment/ day light visible display (2", 4", 6", 8", 12")
Environment	Operating temperature: 0° to 55° celsius
Humidity	up to 95% RH non-condensing
Mechanical	Dimensions : 255 x 280 x 90mm (WxDxH), Weight : 4.4kg

Marketed by :

Kanta King

C-25, 2nd Floor, DSIDC Complex, Kirti Nagar,
New Delhi - 110015, INDIA



+91.9560915555



info@kantaking.com



www.kantaking.com

